

Saddle Pressure System

Intelligent Dynamic Sensing for Equestrian Saddle Pressure Measurement

Saddle Pressure System

includes:

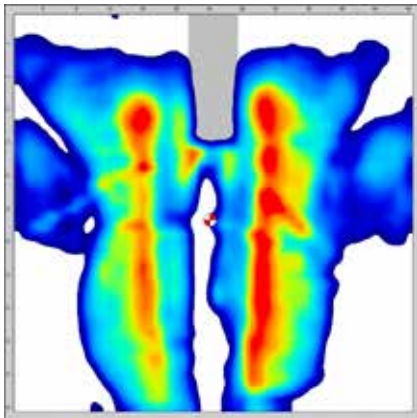
- O= LX100.48.48.02-X4 Sensor
- O= X4 Sensor Pack
- O= XSENSOR Pro V8 Software

Key Features:

- View and compare high-resolution images and recordings to identify peak pressures
- Custom-shape and thin conformable sensor ensures proper fit around horse's withers
- Lightweight Bluetooth® electronics ensure fast set-up for easy static or dynamic measurements
- Durable and waterproof sensor is easily cleaned and does not require recalibration with use

Generate accurate, precise, reliable, and repeatable results quickly and easily.

XSENSOR's all-new Saddle Pressure Measurement System allows saddle fitters, coaches, and equestrians to improve saddle fitting and develop proper seating positions that reduce the risk of injury to horses. Recording, reviewing, and analyzing pressure data provides insights into saddle fitting, rider balance, and rider technique.



The durable urethane fabric cover provides extra protection and durability required for equestrian applications and is easy to clean and maintain. The thin, conformable sensor was designed with a custom cut-out to allow for easy contouring of a horse's withers. No heavy or bulky electronics and no cables or wires allow for quick and easy set-up while the entire system is virtually undetectable to the rider and horse.



Saddle Pressure System is mobile and quick to set-up.

While in motion, such as walking, trotting, galloping, or running, horses experience higher pressure on their backs and shoulders from riders. The Saddle Pressure System measures and records the pressure distribution between saddle and horse and displays the static or dynamic data in real-time with outstanding accuracy and reliability. With compact wireless Bluetooth communication, the lightweight, durable, and flexible sensor can be quickly set-up and used with a variety of saddles, including English and Western saddles.



From the leader in **Intelligent Dynamic Sensing**.

XSENSOR®

Saddle Pressure Measurement System Features

LX100:48.48.02-X4 Sensor

- **Sensor Technology:** Capacitive Pressure Imaging
- **Pressure Range:** 5-200 mmHg
- **Spatial Resolution:** 12.7 mm (0.5 in)
- **Accuracy:** $\pm 5\%$ full-scale *
- **Sensor Size:** 762 x 813 mm (30 x 32 in)
- **Sensing Area:** 610 x 610 mm (24 x 24 in)
- **Thickness (Sensing area, uncompressed):** 1 mm (0.04 in)
- **Ambient Temperature:** 10°C – 40°C
- **Ambient Humidity:** 5% to 90% RH

X4 Sensor Pack

- Wireless sensor pack & battery weigh only 55 g
- Bluetooth-enabled
- Lightweight & durable
- Simple to use & connect

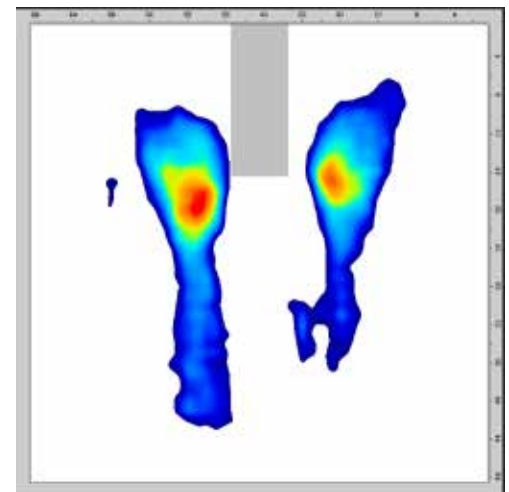
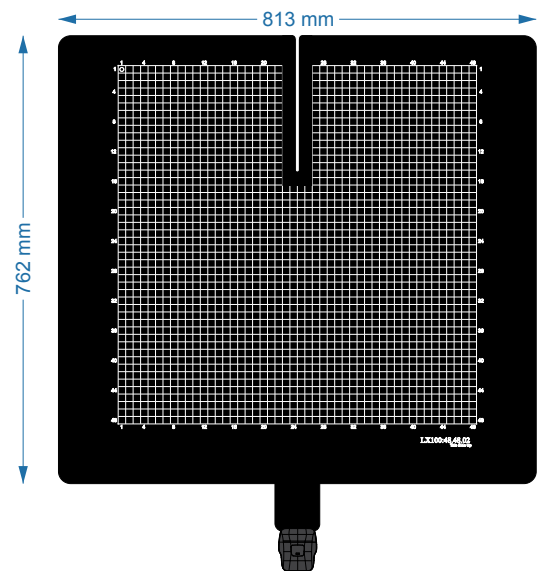
XSENSOR Pro V8 Software

- View real-time or recorded static or dynamic data in 2D or 3D
- View contact area, average and peak pressures, and center of pressure
- Compare individual images or dynamic recordings

Operation Requirements

- LX100:48.48.02-X4
- X4 Sensor Pack
- XSENSOR Pro V8 Software
- USB Charger

* When verified using the standard XSENSOR verification process.



About XSENSOR

XSENSOR develops Intelligent Dynamic Sensing technology to improve safety, performance, and comfort.

XSENSOR[®] Technology Corporation

The Leader in Intelligent Dynamic Sensing

©2020 XSENSOR Technology Corporation. All rights reserved. Reproduction in part or in whole by any means without prior written consent from XSENSOR is forbidden. All trademarks appearing in this document belong to XSENSOR Technology Corporation.

XSENSOR Technology Corporation
133 12 Avenue SE
Calgary, AB, T2G 0Z9, Canada

North America: +1 (866) 927-5222
Phone: +1 (403) 266-6612

sales@xsensor.com
www.xsensor.com